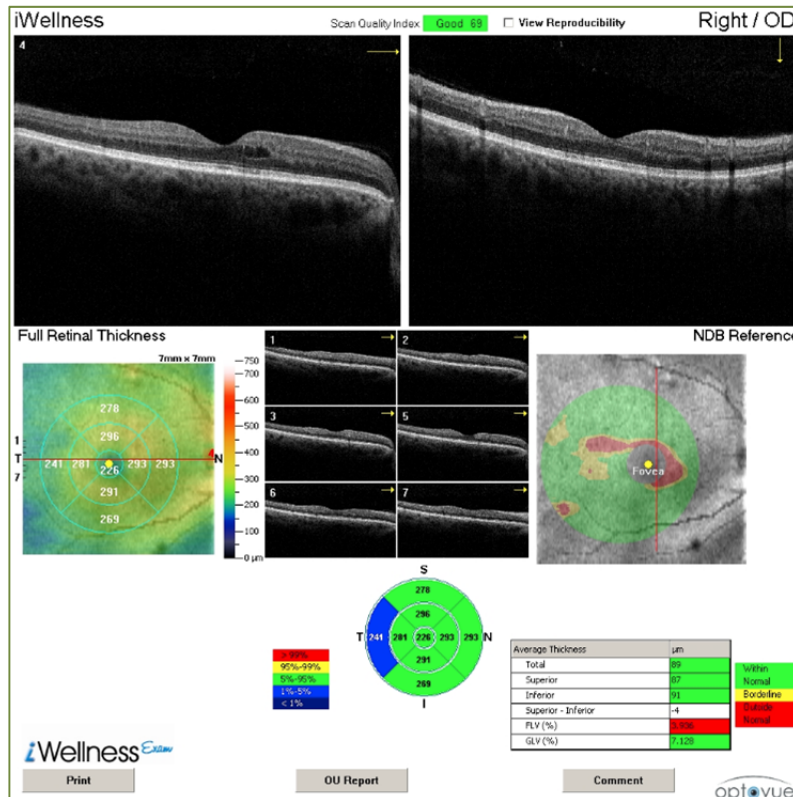


iWellness by Optovue: A Necessary Tool in the Treatment of Diabetic Patients

The iWellness scan, available exclusively on Optovue OCT systems, provides Vision Source® doctors the most competitive pricing on gives Vision Source doctors a new tool for detecting diabetic macular edema earlier than with traditional methods. The scan provides seven retinal b-scans and a retinal thickness map that provide early indicators of vision problems related to diabetes.



Amy Peterson, a Vision Source® doctor from Saxonburg, Pennsylvania, highly recommends the iWellness Exam to her patients and has picked up diabetes-related pathology that she would have otherwise missed. “I had been treating a well-established diabetic patient who had retinal screening photos every year and visual acuity that was 20/20 and stable,” recalls Dr. Peterson. “She came in for her yearly diabetic eye exam and with her *first* iWellness scan; she was found to have early CSME. Even after seeing it on iWellness, it did not show in photos and was not visible on fundusoscopic examination. She has gone on to have multiple injections and her vision has remained stable. Thankfully, it was caught early prior to any vision loss.”



As the only company dedicated exclusively to OCT, Optovue is committed to providing an unrivaled level of service and support to Vision Source® practitioners, including sponsorship of Vision Source’s BrainStream Diabetes Protocols Program, ongoing education through Optovue Academy, in-depth training for technicians and office staff and technical support from representatives that specialize in OCT technology. Optovue is proud to be **Your OCT Specialist.**